



AusIMM New Zealand Branch Annual Conference - Enabling a Sustainable Future

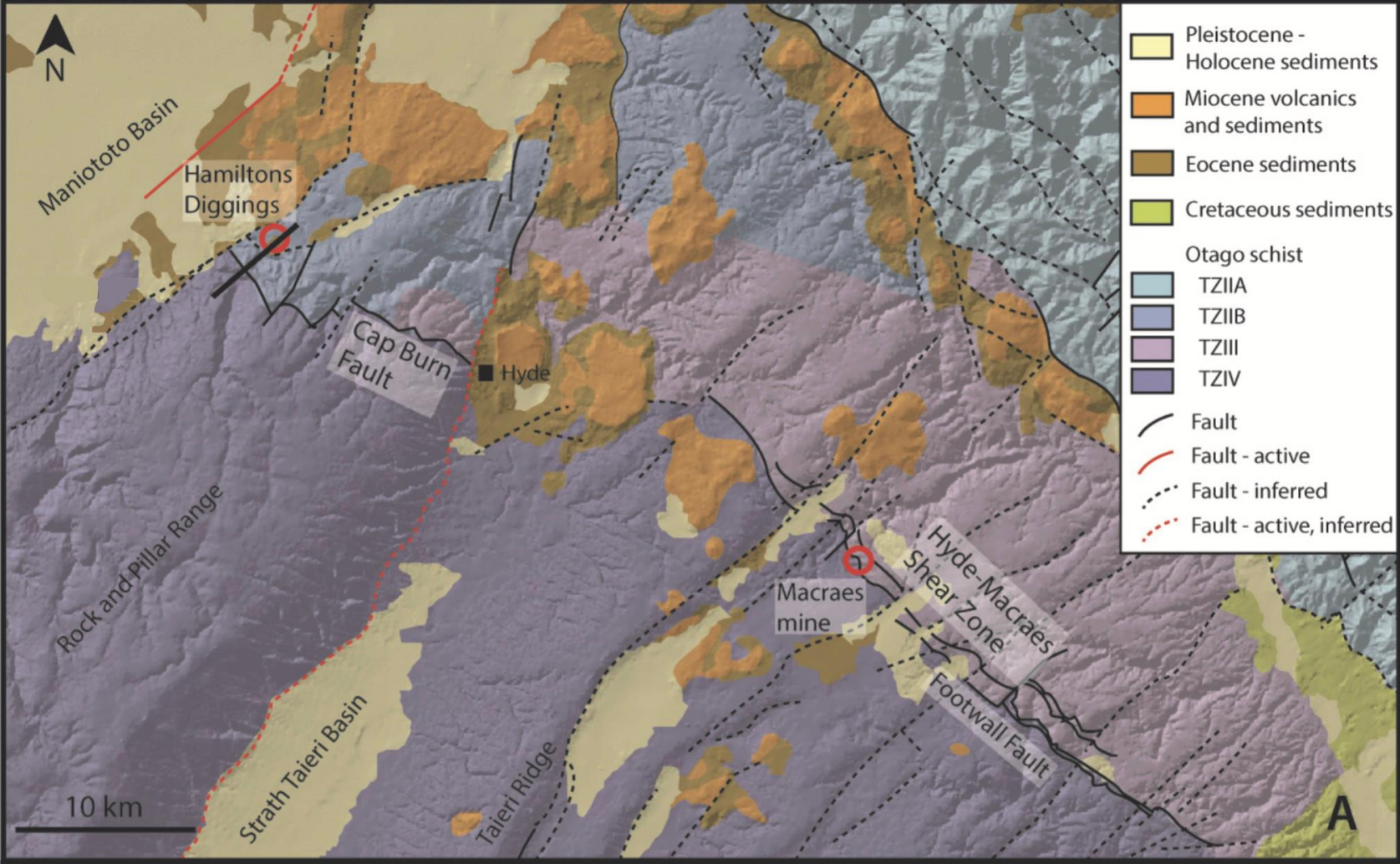
20 - 22 August 2023
Rydges Latimer Christchurch

CAPBURN FAULT MINERALIZATION

Alicia McKean

Supervisors: Doug Mackenzie and Mike Palin

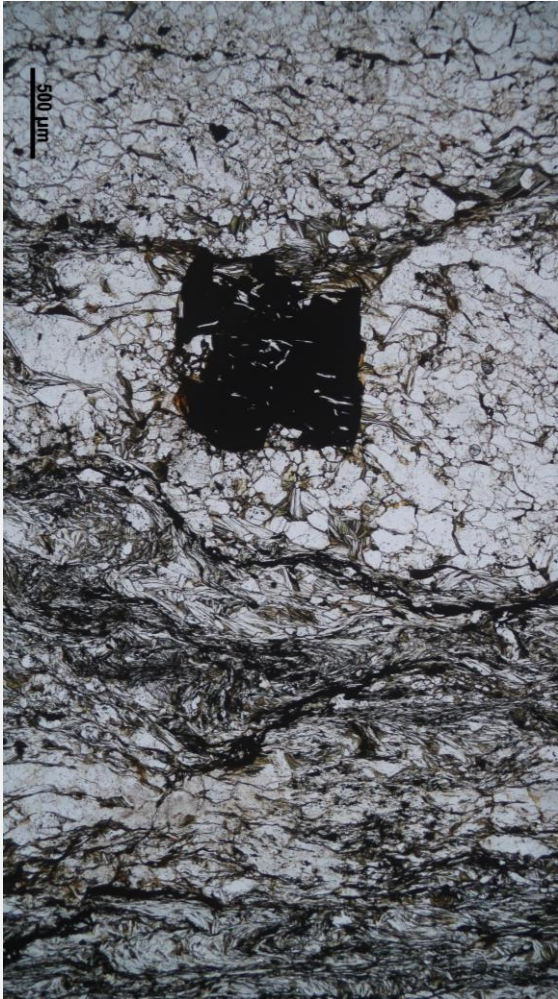
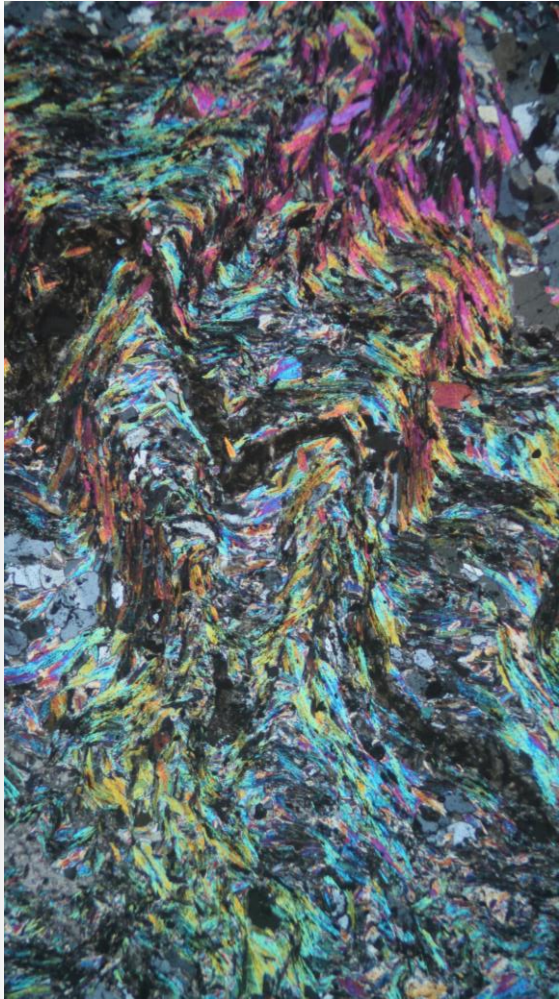
BACKGROUND:

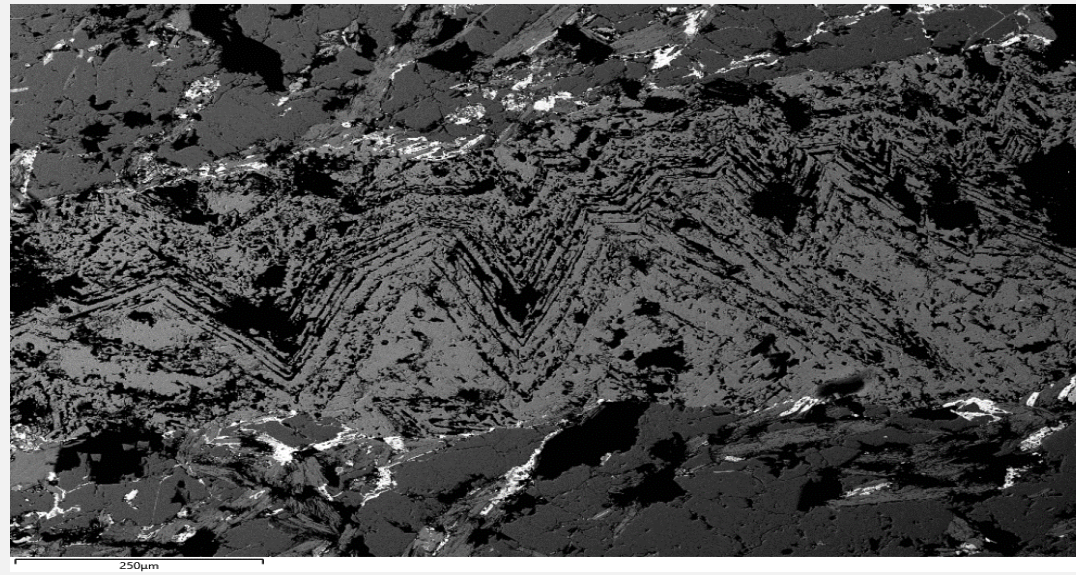
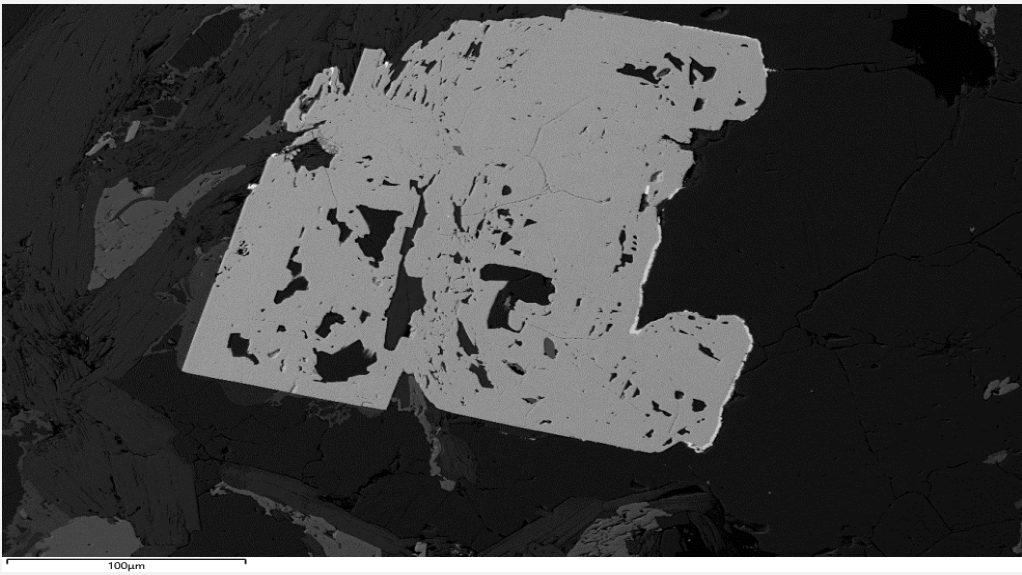


CORE LOGGING

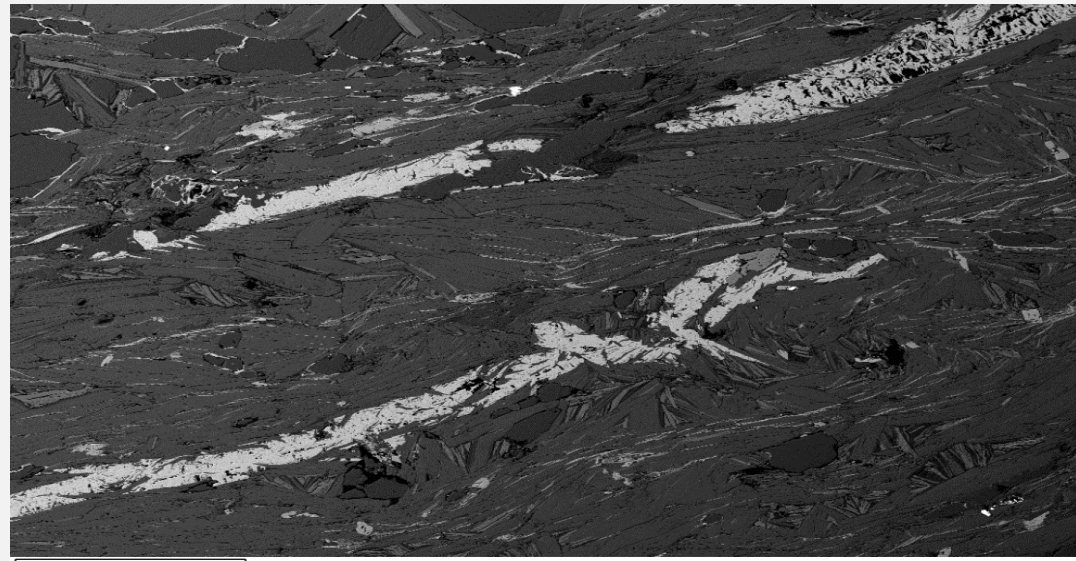
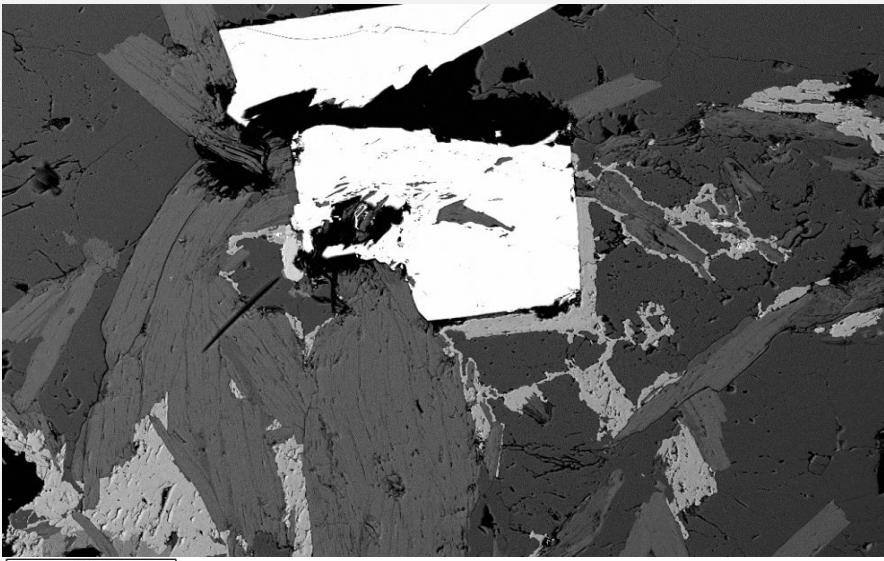


THIN SECTIONS





SCANNING ELECTRON MICROSCOPE
(SEM)



NEXT STEPS

- Analysing the samples from Capburn using LA-ICP-MS.
- Analysing samples from RSSZ and HMSZ via LA-ICP-MS.
- Compare these analyses to identify what if the mineralization at Capburn is its own mineralization pulse or it is closer to HMSZ or RSSZ.