

Beyond Compliance

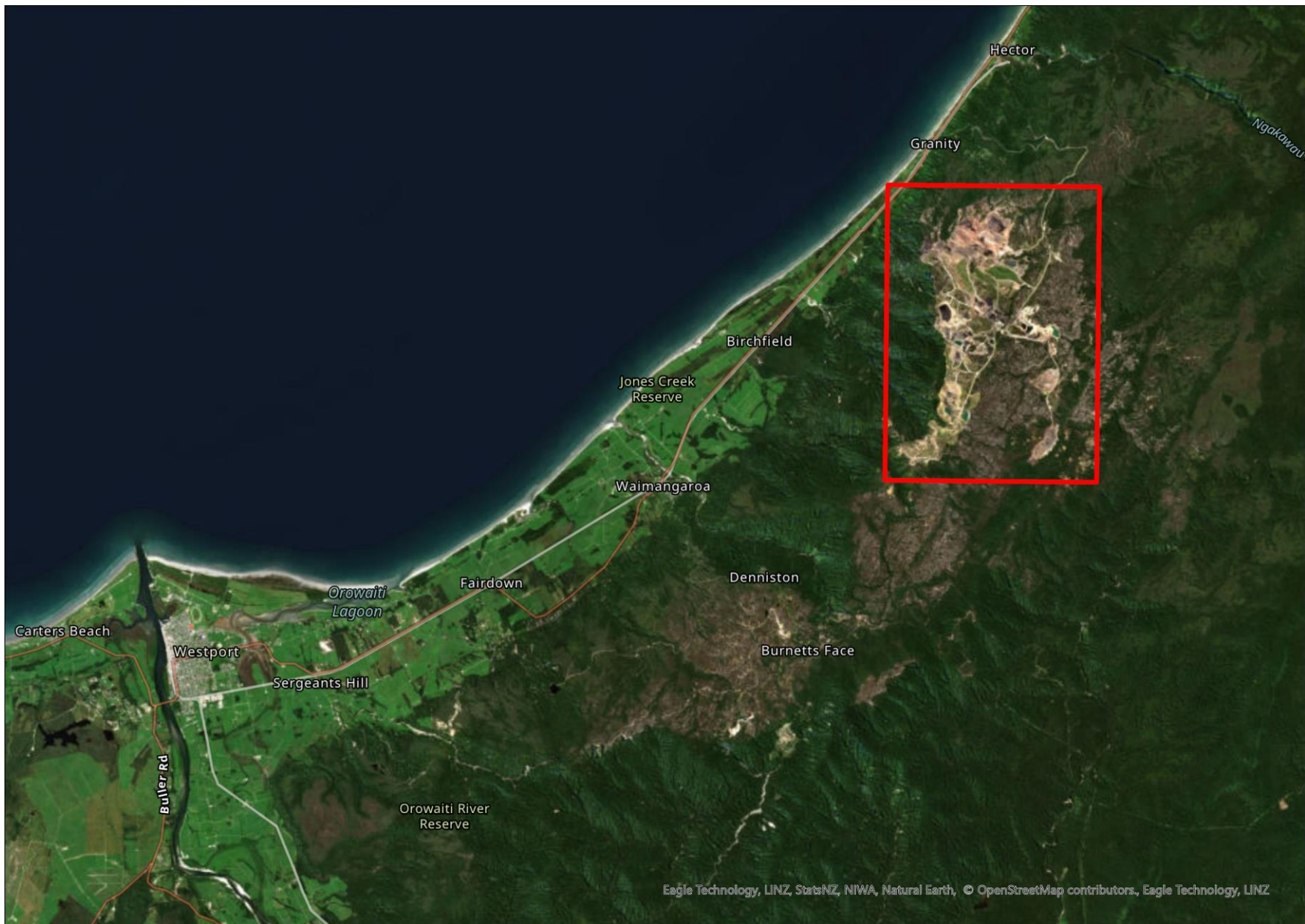
Integrating Environmental Awareness into Responsible Mining Operations
at Stockton Coal Mine

Hilary Cameron | Environmental Advisor | Stockton Mine

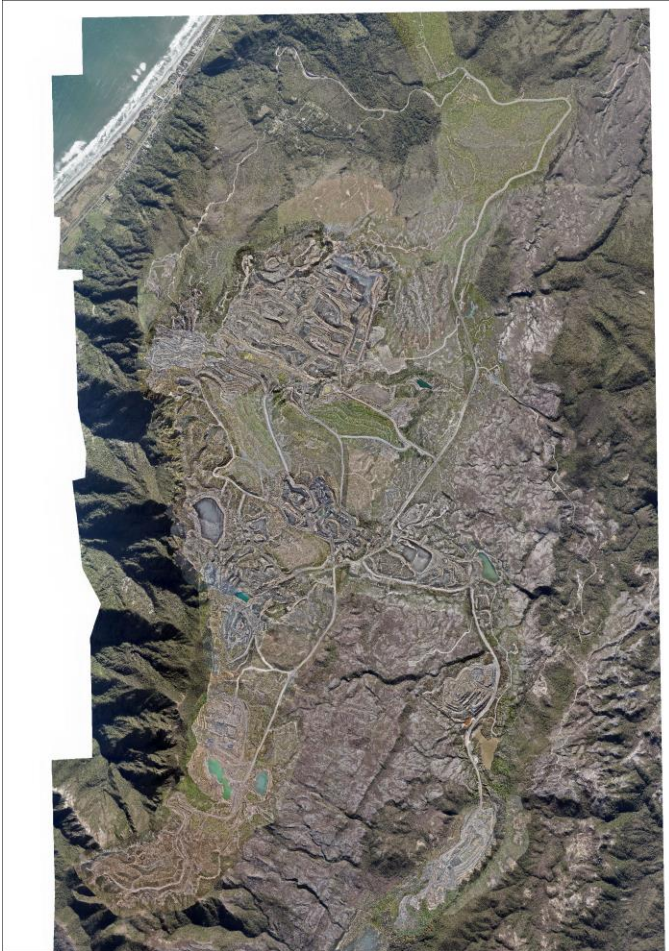
August 2025

Environmental Awareness & Responsibility

- Environmental compliance treated as a check box will ultimately fail
 - Community Consent
 - Social License
- Success will happen when awareness is integrated into site culture
- Operational need versus environmental caution is a daily balance



Compliance



- CML
- ACML
- Mining Permits
- Regional Council Resource Consents
- District Council Resource Consents
- Access Arrangements
- Wildlife Authorities
- Concessions

2221 Compliance conditions in total

- Wider Habitat Enhancement Area
- Snail Enhancement Area
- Oparara Offset

Ecology Pre-disturbance Surveys



- Contractors use GPS boundaries for on-foot surveys for fauna for uplift and translocation
- ArcGIS layers allow for consistent data management
 - Dates in the attribute tables are utilised for symbology
 - Visual data: progress and age of surveys before disturbance easy to track

Wildlife survey daily form - Version July 2024


Notes

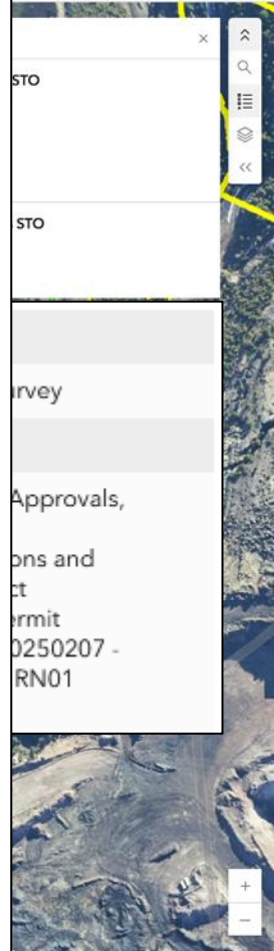
If tracking is older than **Two Weeks** check with Sam/Hilary, as the area will probably need to be re-searched.

High quality kiwi habitat may need to be searched daily. There are multiple factors determining this, check with S

Drone imagery from Dec 2024

Section 1

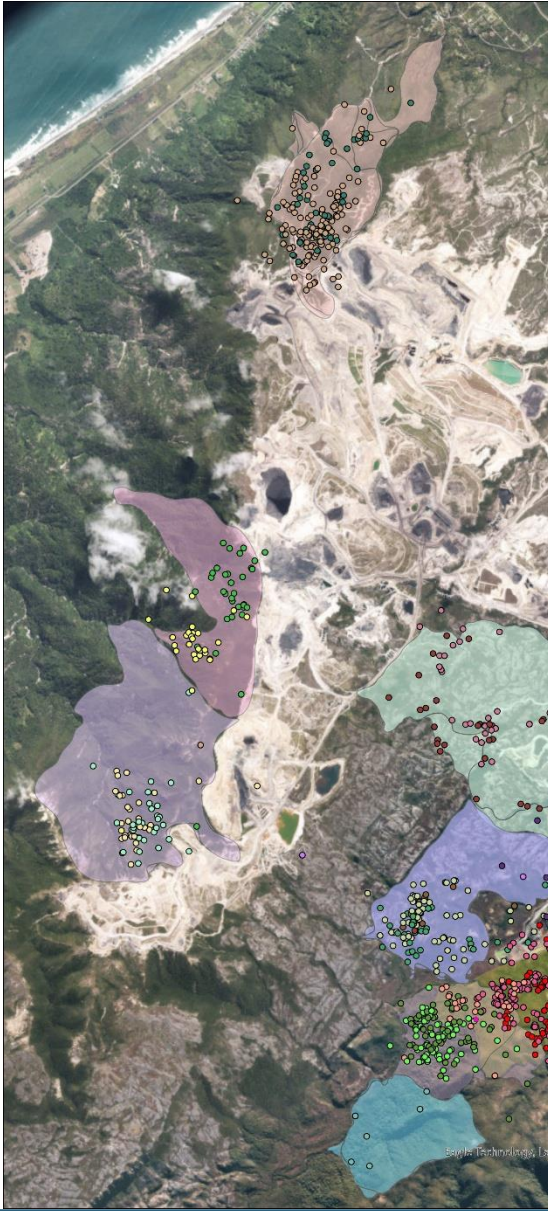
Date	07/02/2025
Search area name/ID	Rockies North - block ID 11
Habitat description	North aspect, gentle sloped area. Surrounded by disturbed ground (mining tracks). Shallow depressions, not quite forming creeks present through the center of the block. Erosion and sedimentation <u>present</u> around the uphill edges of the block, and where water has flowed through the shallow depressions - silt, gravel has been left deposited.
Vegetation <u>types</u> present	Open low (<2 m) manuka scrub with open ground, Open low (<2 m) manuka scrub with <u>Empodismia</u> & manuka ground cover, Dense high (2-5 m) manuka scrub
"Other" vegetation type description (if selected)	<2m tall Kamahi and rata present throughout.
Photo of general area	 <p>NW looking from SE corner</p>



Ecology pre-disturbance Surveys



- Cypress Mine was Consented under the Resource Management Act, granted in 2004
- Development of a Conservation dog team has had a huge impact on our ability to balance fauna outcomes with operational demand



Safety Management of Environmental Fieldworkers



- H&S for remote Environmental fieldworkers does not fit within a conventional Mining framework
- Integrating contractor systems (InReach) with our internal systems (Environmental Monitoring systems) allows more effective H&S management

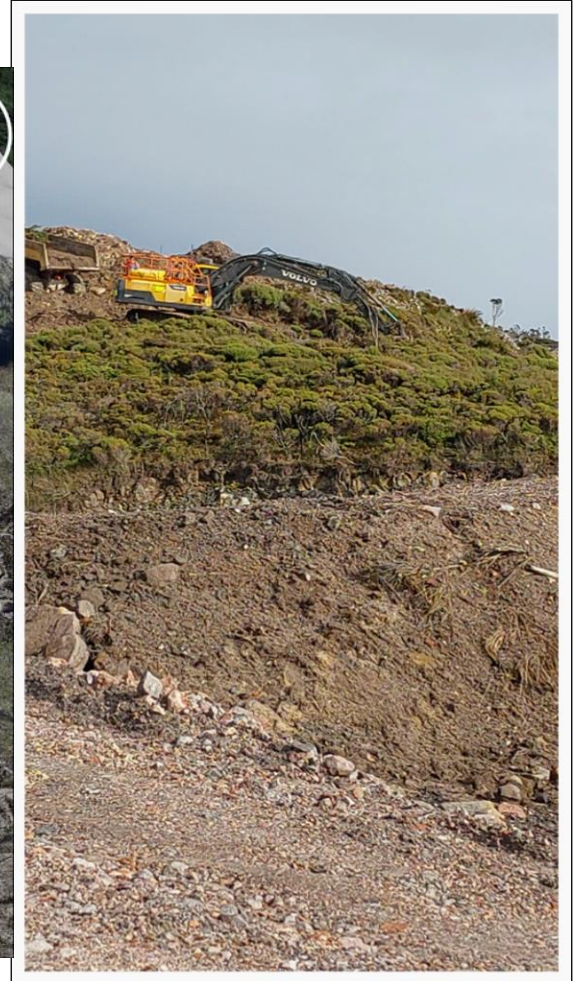
- Stream crossing
- Lightning Risk
- Strong winds

Time	Batt Volt	Conductivity	Level Stage	last_Raw_Pressure	(ClariVUE) Turbidity	Water Temp
2025-08-04 13:00:00	13.96 V	164.60 uS/cm	408.266 mm	0.62	2.92 NTU	5.70 °C
2025-08-04 13:40:00	13.95 V	164.00 uS/cm	408.521 mm	0.62	2.90 NTU	5.67 °C
2025-08-04 13:30:00	13.96 V	164.30 uS/cm	408.294 mm	0.62	2.89 NTU	5.63 °C
2025-08-04 13:20:00	13.96 V	164.60 uS/cm	408.379 mm	0.62	2.88 NTU	5.60 °C
2025-08-04 13:10:00	13.99 V	164.00 uS/cm	408.409 mm	0.62	2.86 NTU	5.56 °C
2025-08-04 13:00:00	13.98 V	164.10 uS/cm	408.386 mm	0.62	2.87 NTU	5.52 °C
2025-08-04 12:50:00	13.99 V	164.20 uS/cm	408.456 mm	0.62	2.85 NTU	5.50 °C
2025-08-04 12:40:00	13.99 V	163.30 uS/cm	408.364 mm	0.62	2.85 NTU	5.49 °C
2025-08-04 12:30:00	14.01 V	164.10 uS/cm	408.243 mm	0.62	2.80 NTU	5.46 °C
2025-08-04 12:20:00	14.01 V	164.30 uS/cm	408.347 mm	0.62	2.82 NTU	5.43 °C
2025-08-04 12:10:00	14.01 V	165.30 uS/cm	408.356 mm	0.62	2.87 NTU	5.41 °C
2025-08-04 12:00:00	14.43 V	165.20 uS/cm	408.287 mm	0.62	2.54 NTU	5.40 °C
2025-08-04 11:50:00	14.48 V	163.80 uS/cm	408.166 mm	0.62	2.59 NTU	5.40 °C
2025-08-04 11:40:00	14.53 V	164.00 uS/cm	408.124 mm	0.61	2.67 NTU	5.36 °C
2025-08-04 11:30:00	14.56 V	164.00 uS/cm	408.151 mm	0.61	2.67 NTU	5.32 °C
2025-08-04 11:20:00	14.59 V	163.10 uS/cm	408.145 mm	0.62	2.72 NTU	5.25 °C
2025-08-04 11:10:00	14.82 V	163.10 uS/cm	408.200 mm	0.62	2.73 NTU	5.23 °C
2025-08-04 11:00:00	14.62 V	163.00 uS/cm	408.308 mm	0.62	2.76 NTU	5.18 °C

Collaboration: *Powelliphanta augusta* habitat restoration



Vegetation Direct Transfer (VDT)





Key Takeaways

- Awareness unlocks pro-active environmental management vs reactive
 - It starts with Long term planning
 - It is supported by managers and supervisors
 - It is most successful when operations buy in
- Supporting opportunity and innovation
- Evolving community expectations: The social license to operate